

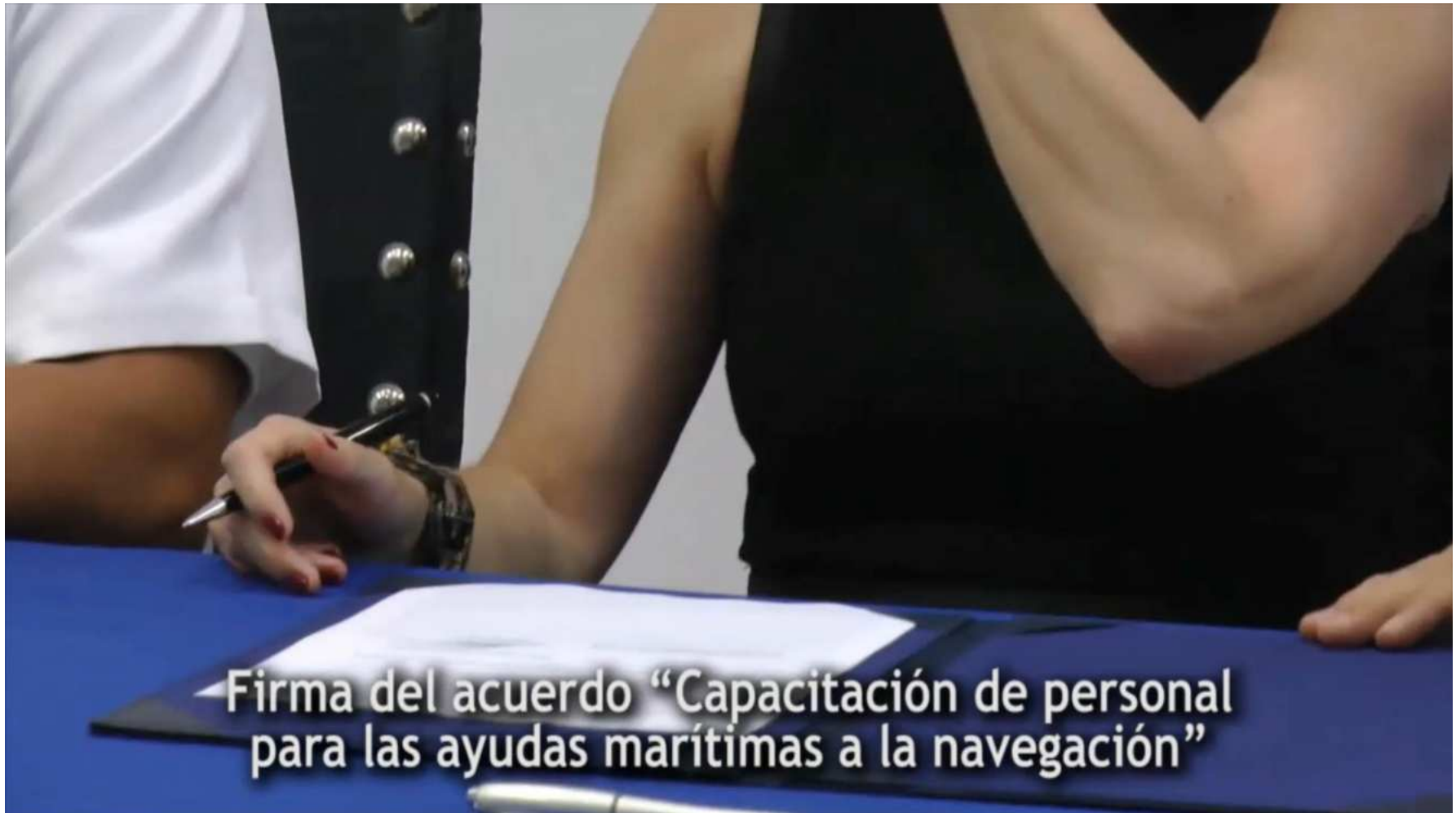


**IALA**





## Colombia DIMAR/IALA signing 2019

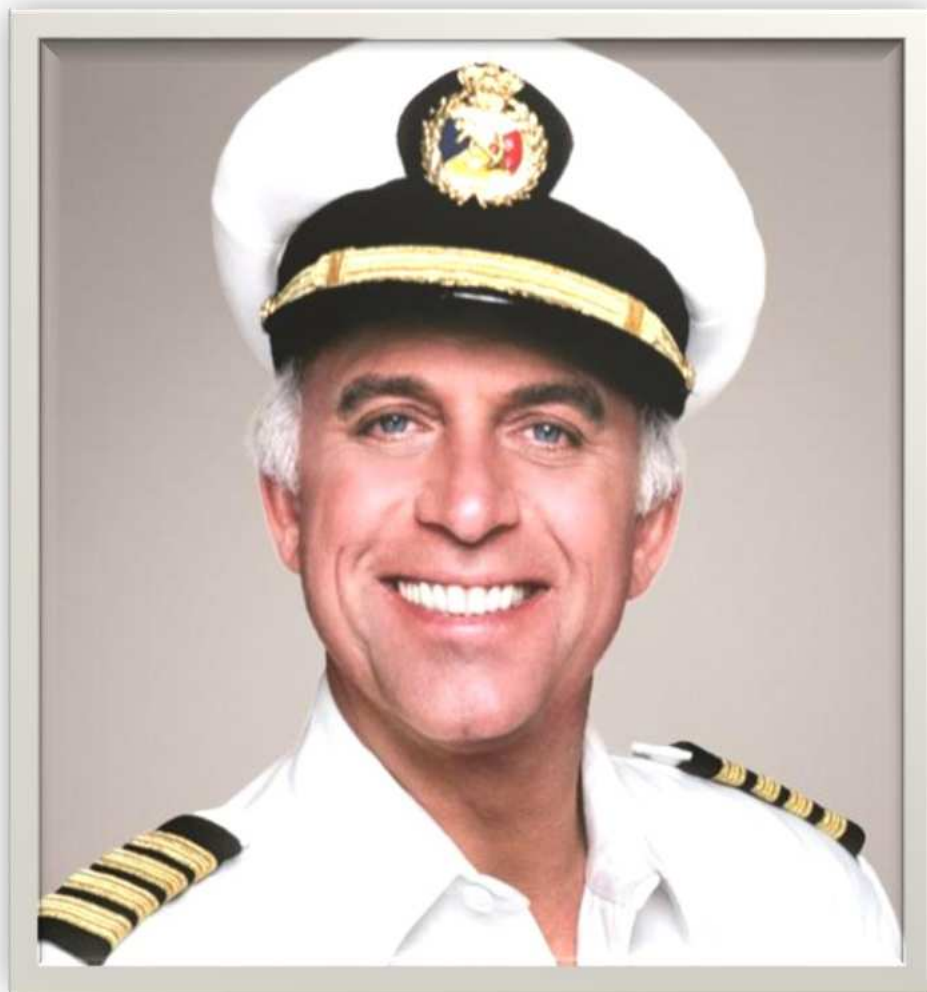


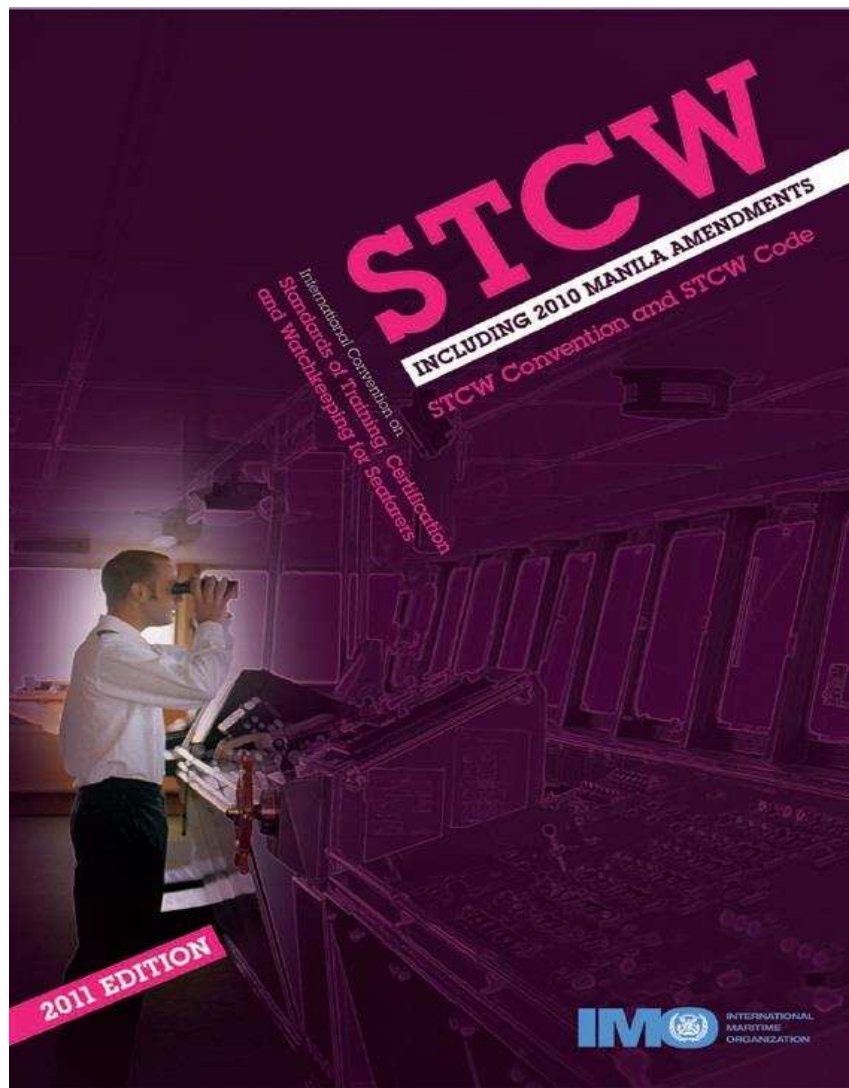
Firma del acuerdo "Capacitación de personal para las ayudas marítimas a la navegación"



## 2 Congreso Lecciones Aprendidas

The importance of Risk Assessment for the identification of mitigation measures





A marine aid to navigation (AtoN) is “a device or system **external** to a vessel that is designed and operated to enhance the safe and efficient navigation of vessels and/or vessel traffic”.





**IALA**





# IALA Strategic Vision and Goals for 2026

## Goal 1

Marine Aids to Navigation are **developed** and **harmonized** through international cooperation and the provision of standards.

## Goal 2

All coastal states have contributed to a sustainable and efficient global network of Marine Aids to Navigation through capacity building and the sharing of expertise.



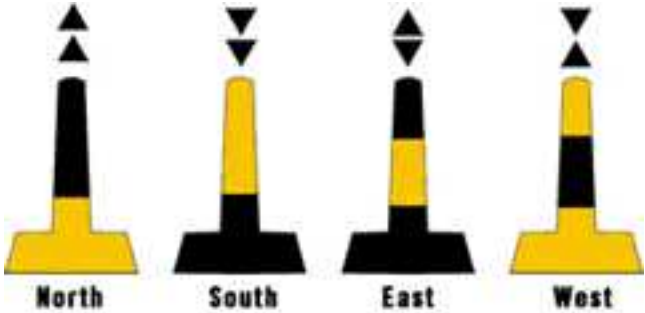


## Stealth designed AtoN

Not detectable by the eye  
Not detectable by a ships radar  
Constructed on a concrete structure



# Pelicans as a topmark





# IMSAS Audit Summary – October 2021

## Finding

The State had not taken necessary measures to ensure the availability and maintenance of AtoN in the waters under the jurisdiction of the State. **No assessment had been made on the requirement of AtoN based on volume of traffic and degree of risk** (SOLAS 1974, regulation V/13; III Code, paragraph 47).

## Root cause

There was a **lack of financial resources** and there was **no clear responsibility** assigned with regard to the establishment and maintenance of Aids to Navigation (AtoN) services.

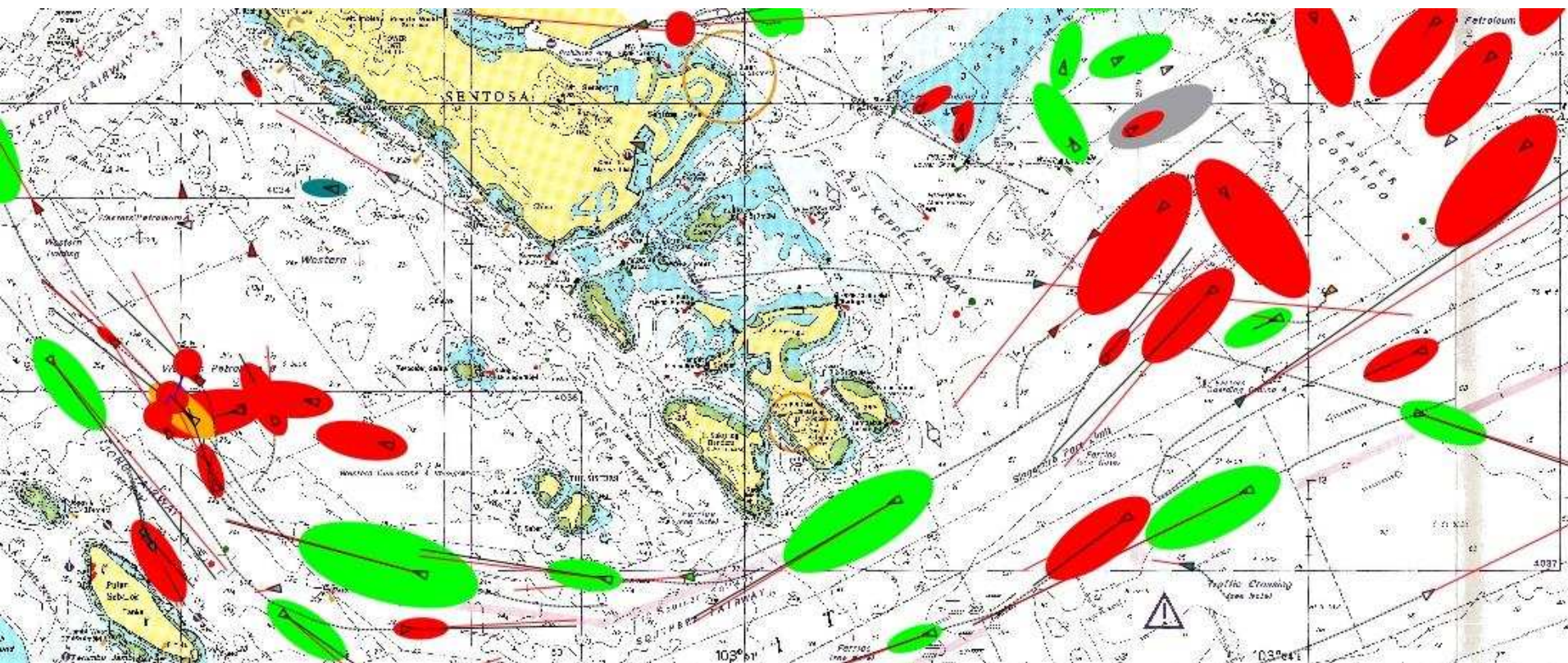
## Corrective action

The responsible entity will implement the following actions:

1. conduct a comprehensive risk assessment to determine the requirements for all AtoN;
2. based on the aforementioned assessment, install AtoN;
3. create a database to ensure the service and maintenance of AtoN; and
4. establish an AtoN maintenance fund to provide required financial resources.



# IALA Risk Management Toolbox



# IALA Risk Management Toolbox

- IWRAP Mk2
- PAWSA
- SIRA
- Simulation

Endorsed by IMO in  
SN.1/Circ.296









# Guatemala stakeholder meeting



Durante una misión técnica se llevan a cabo muchas reuniones de las partes interesadas en los puertos.

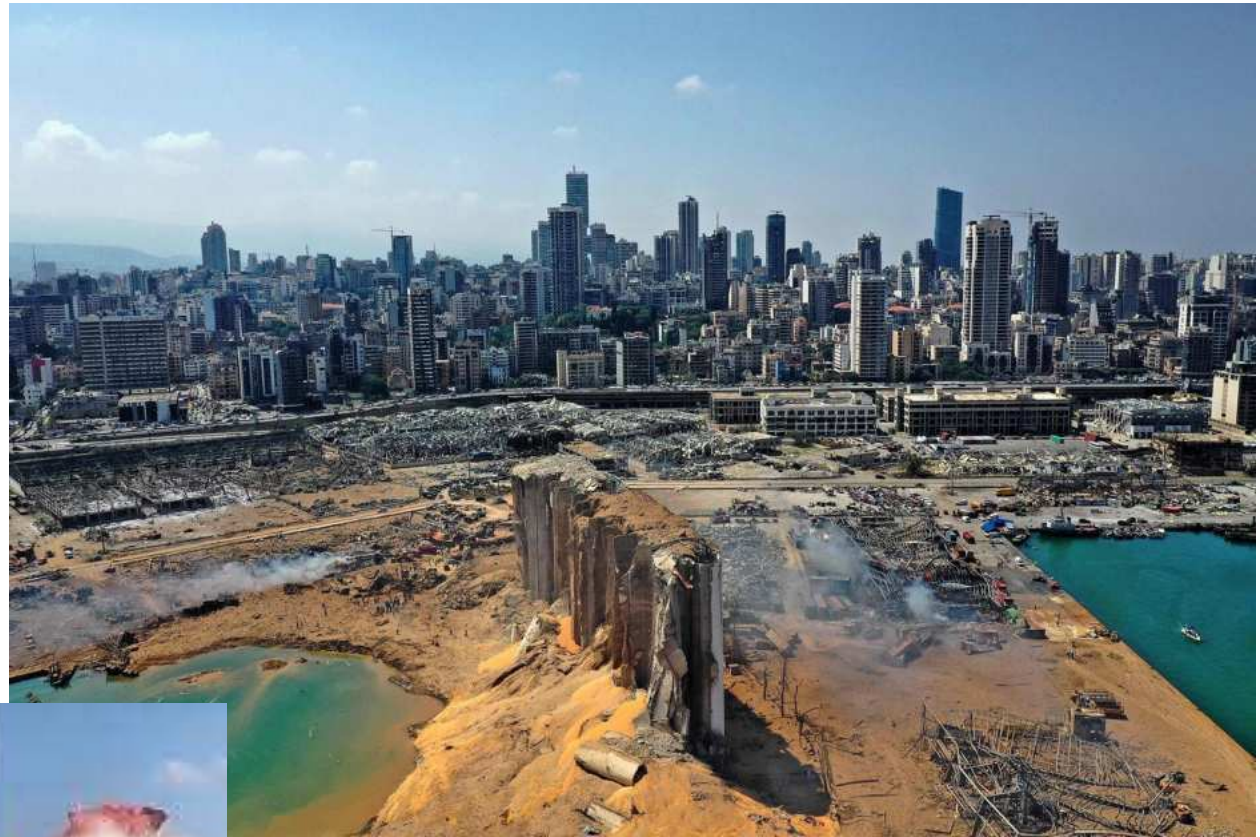


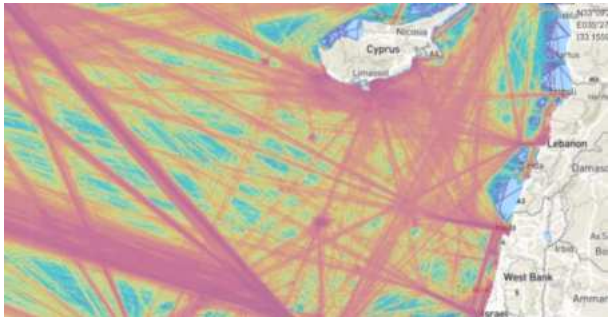


# Examples of risk assessments

Lebanon, Somalia, Port of Antwerp

# Beirut explosion



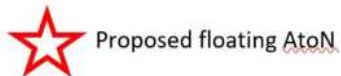
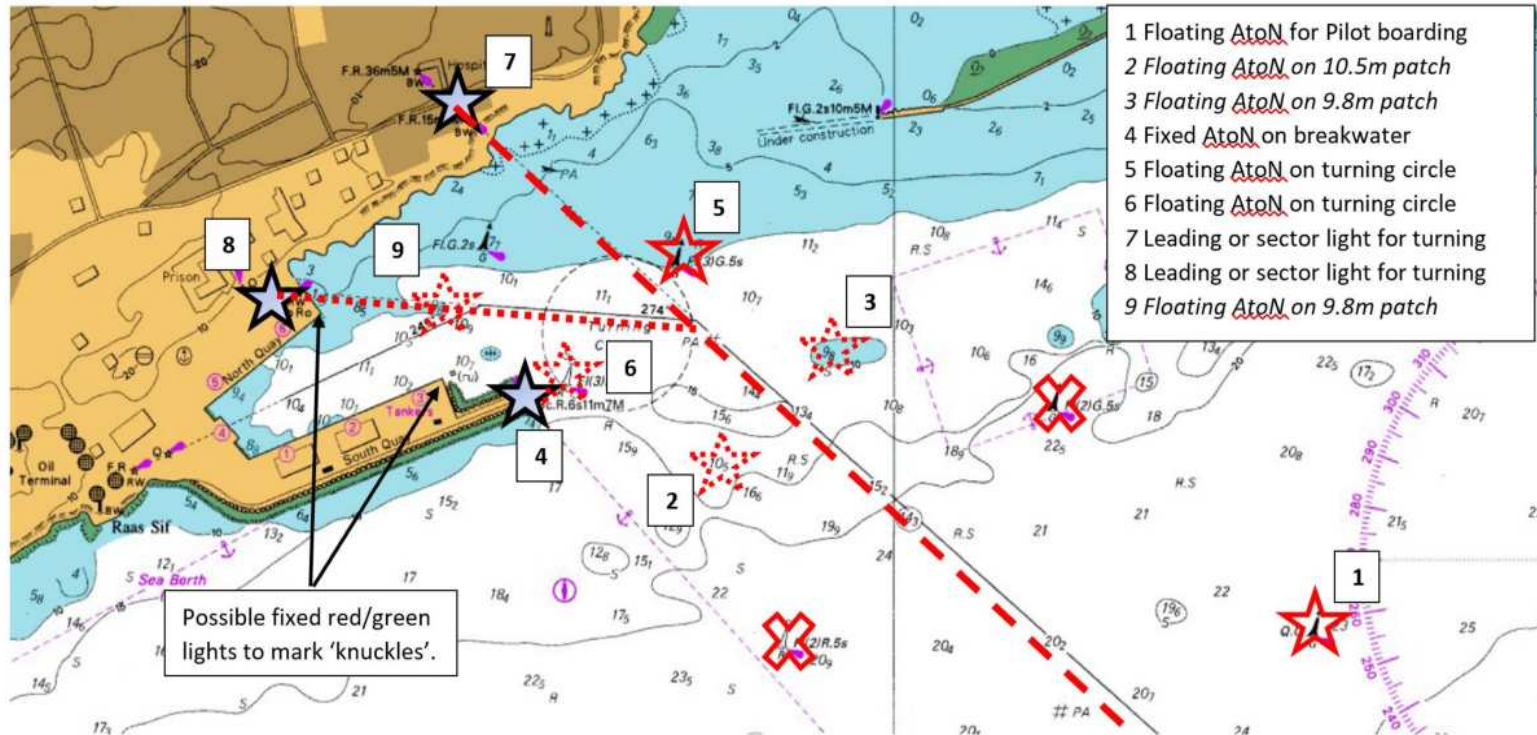


**PAWSA  
workshop  
Lebanon**





# Somalia capacity building project



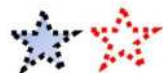
Proposed floating AtoN



Floating AtoN that are not planned for reinstatement



Proposed fixed AtoN



Fixed or floating AtoN (subject to further stakeholder discussion)

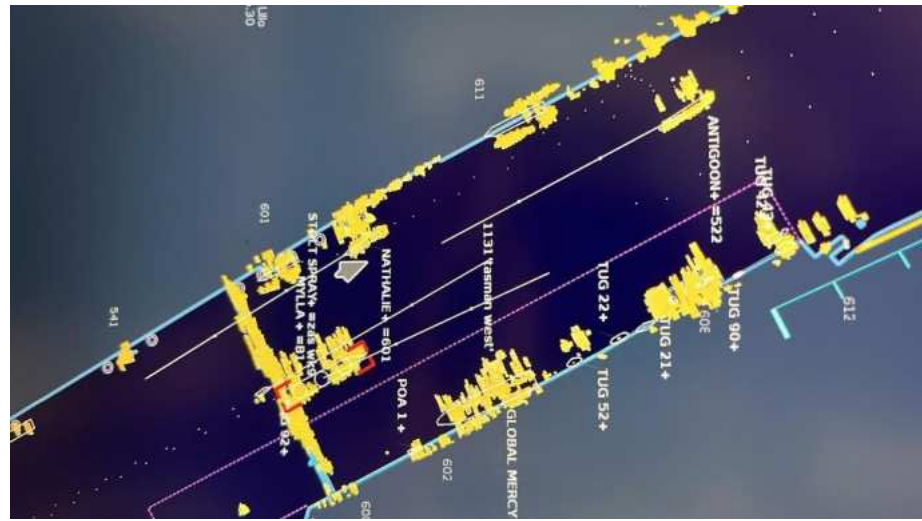
## SIRA risk assessment and the new AtoN deployment plan

# Somalia capacity building project



**SIRA Workshop  
Mogadishu, Somalia**

**Fort Sheike Lighthouse**



**Port of Antwerp  
PAWSA workshop,  
Tasmin West visit**







QUESTIONS?

MAIL, TEXT OR CALL ME

[gerardine.delanoye@iala-aism.org](mailto:gerardine.delanoye@iala-aism.org)

+ 33 676 45 50 38